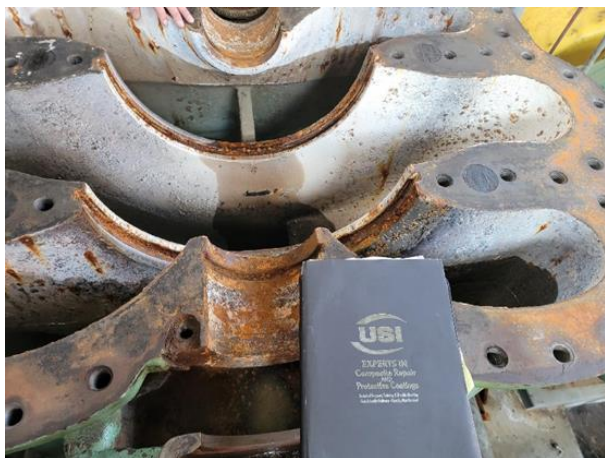


Water Pump Refurbishment



PROBLEM

A major water plant was concerned about the erosion and corrosion of their 1,500-horsepower water pump. Instead of replacing the water pump, they contacted USI for our repair and protection solutions

SUBSTRATE

Steel

PRODUCTS USED

[RESIMETAL 201 Ceramic Repair Paste](#)

[RESIMETAL 203 Ceramic Repair Fluid](#)

SOLUTION

The water pump was first abrasive blasted to the NACE #2 standard of near-white metal. As the corrosion to the pump was significant, it had to be rebuilt using [Resimetal 201](#).

Two coats of [Resimetal 203](#) were then applied to prevent future erosion and corrosion. [Resimetal 203](#) also helped improve the efficiency of the water pump and reduced the electrical consumption of it. Ultimately, the coating saves the customer over \$30,000 in electrical consumption each year. USI's solution will ensure the proper operation of the water pump for years to come.