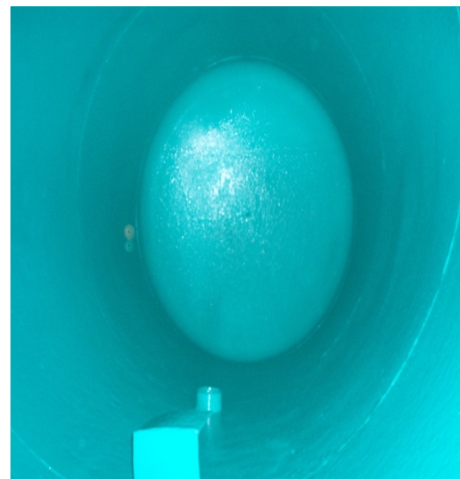


Internal Tank Protection



PROBLEM

This wastewater treatment plant was concerned about sodium hypochlorite (bleach) attacking their steel tank and structure. There were severe corrosion issues.

They called in their local Unconventional Solutions technical consultant to make a recommendation for the proper product for their repair.

SUBSTRATE

Steel

PRODUCTS USED

[3M Scotchkote 323+](#)

SOLUTION

The tank was grit blasted to achieve a two-to-four-millimeter anchor profile near-white finish, also known as SP10 or NACE #2.

Using [3M Scotchkote 323+](#), a high performance, high-build coating, combined with the HSS spray system allowed the contractor to spray apply the coating 40 millimeters thick in one application. They used a basic compressor instead of the traditional more expensive heated plural spray.