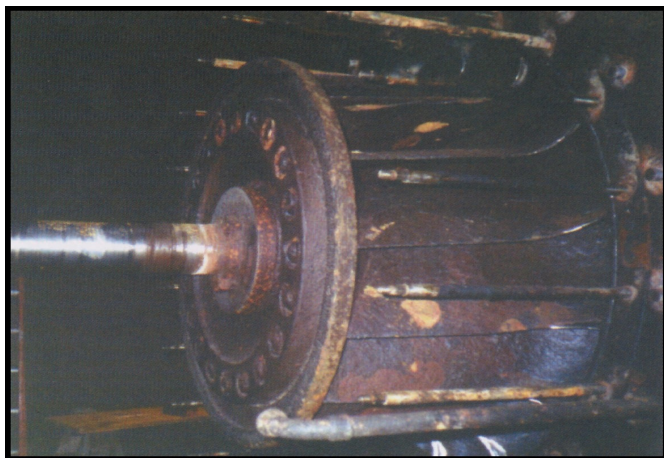


Turbine Refurbishment



PROBLEM

This turbine was originally built in 1923 and was used in a hydro-electric power plant.

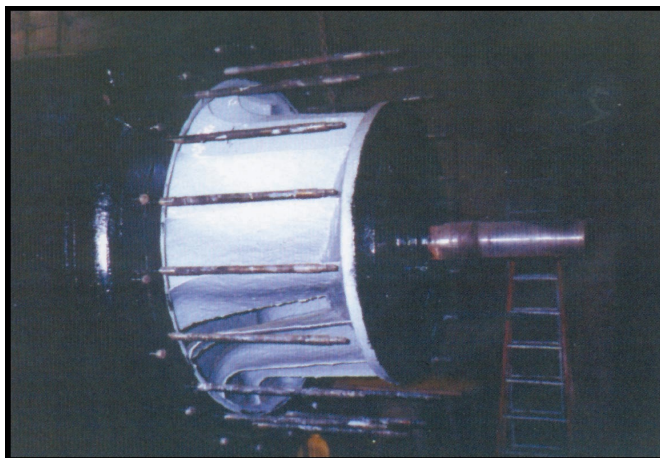
The whole turbine was badly worn after years of use without protection. A protective coating was required to protect the equipment from future erosion, corrosion, and cavitation attack.

SUBSTRATE

Metal

PRODUCTS USED

[RESIMETAL 201 Ceramic Repair Paste](#)
[RESIMETAL 202 \(2 colors\)](#)



SOLUTION

The turbine was dismantled, and all metal surfaces were abrasive blasted to SA 2-1/2.

All blasted surfaces were then coated with [RESIMETAL 201 Ceramic Repair Paste](#) which was applied at approximately 1mm.

Then two coats of [RESIMETAL 202](#) were applied. The first coat was red and was followed by a coat of gray. This system is used so that areas that need preventative maintenance can be easily identified.

The turbine was then reassembled and put back into service.