

ARE YOU READY TO CHOOSE THE CORRECT COLD WEATHER COATING, LINING OR TAPE?

If you are a pipeline operator, most likely it's your job to choose a coating that will meet the pipeline operating parameters. There are two to be most aware of: **#1** Your coating choice should be suitable for the environment where it will be used. **#2** In the case of field application, you would want your choice to require the least effort and complexity (saving you time and money). **And all applicators should be trained in product-specific application procedures. The USI Team is here to help you with all of those choices!**



DENSO PROTAL 7125

One of USI's NACE CIP's is doing a field application training of Protal 7125. Protal 7125 is specifically formulated to be applied to colder substrates at colder ambient temperatures. It is a high build liquid coating that is brush or spray applied in one coat to many areas of in-service pipelines or during pipeline construction in the field. It cures fast, even down to -4°F (-20°C). Protal 7300 is specifically formulated for the exterior coating of pipelines, structures or other steel surfaces that may be wet or damp due to the environment or as a result of atmospheric condensation. It cures between 32°F (0°C) to 150°F (65°C).



DENSO LT TAPE

Denso LT Tape is composed of a non-woven synthetic fabric carrier, fully impregnated with a neutral compound based on saturated petroleum and inert silicious fillers. Denso LT Tapes are specifically designed for applications at cooler ambient temperatures. Denso Archco 476 LT Epoxy is a two-part, high-temperature resistant, epoxy phenolic-novolac system designed for internal tank linings requiring excellent chemical and temperature resistance over a wide range of temperatures and pressures. It is designed for plural-component spray applications at low ambient temperatures and/or where fast return to service is required.



SP2831

SP2831 is a solvent free, 100% solids, two-component epoxy coating that has the ability to cure down to 32°F (0°C). It is used for application in cool weather (fall/winter) where other coating systems would require preheating of the substrate or enclosure and application of external heat for curing purpose. It is ideal for utilization on facilities operating at low temperatures, which precludes the use of preheating/external heat. SP4888 is a 100% solids, high performance epoxy coating developed specifically for application on wet or damp steel surfaces due to the environment or as a result of atmospheric condensation.



DENSO PROTAL 7300



DENSO ARCHCO 476LT



SP4888

Contact USI TODAY 248-735-7000 Your Midwest/Great Lakes Stocking Distributor & Training Experts And Set up a Site Visit to receive a FREE Audit. Let the USI Team find the BEST Solution for your Unique Issues.

November 2019 UPCOMING EVENTS

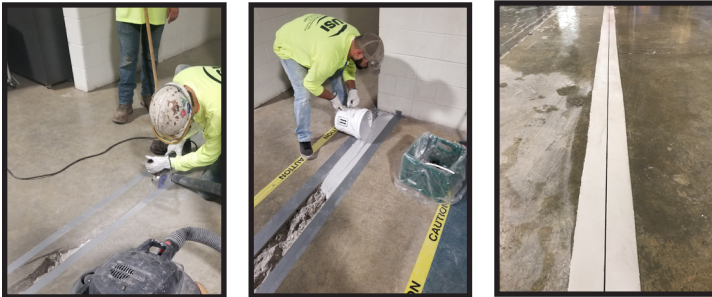
- Wednesday/Thursday November 6/7 - AUCSC Meeting, Coraopolis, PA
- Thursday November 21 - SEMPES Meeting, Dearborn, MI
- Thursday November 28 - **HAPPY THANKSGIVING!!!**

December 2019 UPCOMING EVENTS

- Wednesday December 4 - OCC, Bellville, OH
- Friday December 13 - CRCUC/Chicago NACE Boat Cruise, Chicago, IL
(REGISTRATION REQUIRED)
- Wednesday December 25 - **MERRY CHRISTMAS!!!**
- Tuesday December 31 - **NEW YEARS EVE!!!**

DO YOU HAVE INDOOR CONCRETE ISSUES THAT NEED TO BE FIXED THIS WINTER?

THE USI TEAM CAN HELP WITH THAT TOO!



CONTRACTORS CORNER



3 TIPS FOR APPLYING COLD WEATHER COATINGS & TAPES

#1 Snow, ice and other surface contaminants should be removed with a broom or by hand to prevent damage to the pipe. The pipe must be clean and dry; remove all substances that will impede the bond.

#2 Keep the products, coatings, tapes or primers at their recommended storage and application temperatures found on the Technical Data Sheets by storing them in a warm environment or in your vehicle's cab with the heater on until you're ready to start the application process.

#3 Make sure the temperature of your pipe surface is at the recommended degree according to the products Technical Data Sheet. If needed, create an enclosed heated area and heat the pipe if needed.

The USI Team offers:

Technical Support • Training • Troubleshooting

HOT SHOT Same Day Local Deliveries for Emergencies and Next Day Deliveries for orders placed by **2:00PM** EASTERN TIME

CONTACT THE USI TEAM TODAY! We have an Unconventional Solution for YOU!

Tiffany

President & Technical Support - MI HQ
tiffany@USIgroups.com • 248-515-4938

Doug

Technical Director USA - MI HQ
dk@USIgroups.com • 248-830-2935

Christine

Staff Accountant - MI HQ
accounting@USIgroups.com • 248-735-7000 Ext 204

Christina

Graphics/Media - MI HQ
graphics@USIgroups.com • 248-735-7000 Ext 205

Julie

Receptionist/Customer Service - MI HQ
office@USIgroups.com • 248-735-7000 Ext 202

Joe

Inventory Specialist - MI HQ
warehouse@USIgroups.com • 248-735-7000 Ext 206

Chris

Executive Assistant/Customer Service - MI HQ
cs@USIgroups.com • 248-735-7000 Ext 203

Brittany

Technical Sales Consultant/Support/Training - SW Ohio Branch
dayoffice@USIgroups.com • 513-383-6302

Jason

Shipping/Receiving/Customer Service - SW Ohio Branch
daywh@USIgroups.com • 937-704-4220

Tom

Warehouse/Inside Sales - SW Ohio Branch
isday@USIgroups.com • 937-202-0002



FAST, FRIENDLY DELIVERY - RESULTS, NOT EXCUSES!

MI HQ 248-735-7000 | OH 937-704-4220 | IN 219-733-0541
www.USIgroups.com

MI HQ - 28056 Oakland Oaks CT., Wixom, MI 48393

