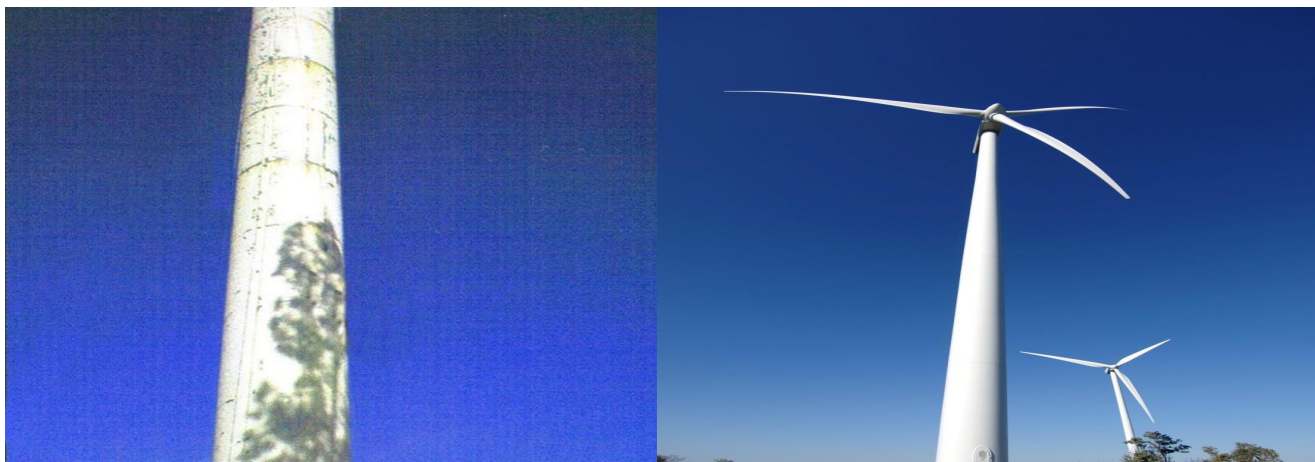


## Wind Tower Repair



### PROBLEM

This wind tower in the thumb region of Michigan has become damaged over a period of time and requires refurbishing due to severe corrosion. The customer was looking for a high performance long-term repair solution.

The client asked Unconventional Solutions to provide an effective repair and protection solution to their problem.

### SUBSTRATE

Metal

### PRODUCTS USED

[MBX Electric Bristle Blaster](#)

[RESICHEM 506 ALUPRIME](#)

[RESICHEM 555 Resinox](#)

### SOLUTION

The steel tower was prepared by using a [MBX Electric Bristle Blaster](#), which mimics the results of grit blasting, to a near white metal finish, or a NACE Grade Two.

One coat of **RESICHEM 506 ALUPRIME**, an epoxy high solids steel protection system, was applied to the severely corroded areas.

Then, two coats of [RESICHEM 555 Resinox](#) was applied. Although it is possible to apply heavier film builds with a spray or brush, two coats, with drying time, is recommended to ensure the minimum DFT of 350 microns (14 mils) is achieved to give the long lasting results desired

**RESICHEM 555 Resinox**, available in grey or white, is a water based, high build acrylic encapsulation system with optimum level of UV resistance to offer an anti-corrosive protection to the steel structure.