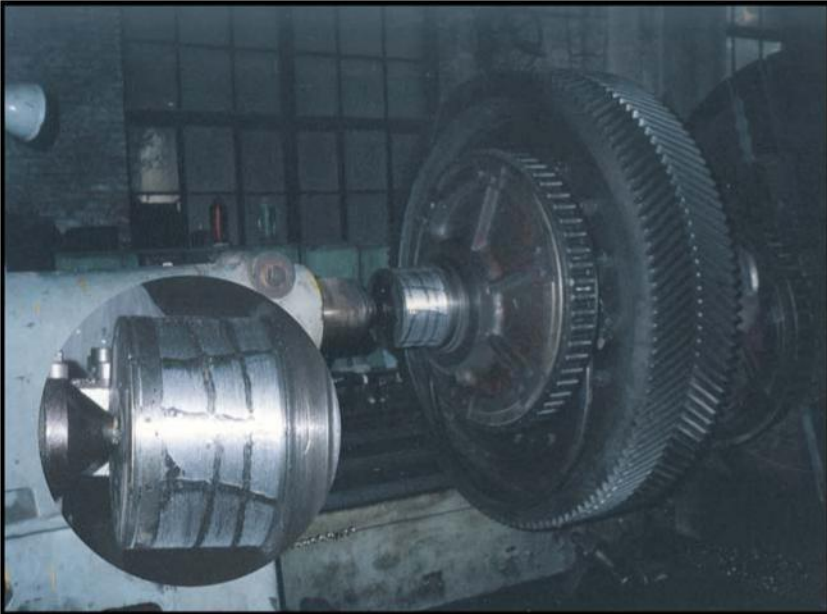


## Project: Shaft Rebuild



### The Problem

The power station shaft shown in the photograph had worn out due to years of service and was repaired by welding several years ago. A recent maintenance inspection at the power station revealed that the shaft had worn out once again.

### Solution

The plant manager decided to use **USI Metal Repair EG** to rebuild this important piece of machinery. The worn section of the shaft was suitably prepared, ensuring that any loose material and surface contaminants had been removed.

The metal surface was roughened by mechanical means and degreased using **USI Universal Cleaner** prior to the application of **USI Metal Repair EG**. After the minimum cure time of 2 hours, the shaft was then machined back to its original diameter.

**USI Metal Repair EG** is a two component, epoxy metal repair compound. It provides enhanced corrosion and chemical resistance as well as good mechanical strength in one easy application.

