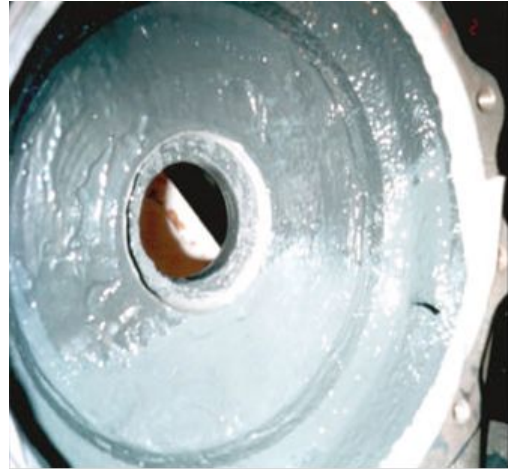
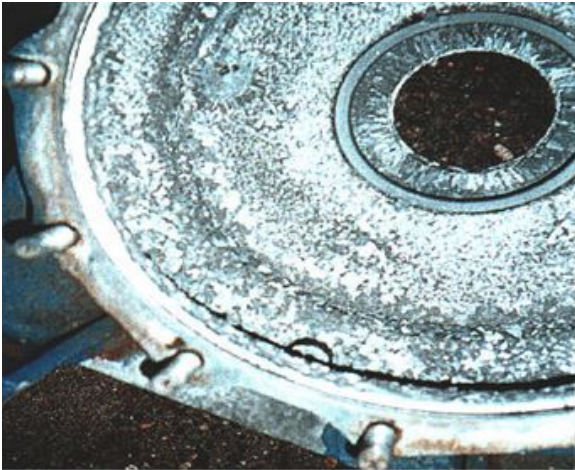


Wastewater Treatment Plant Rotary Sewage Pump Housing



PROBLEM

The rotary sewage pump housing at this wastewater treatment plant was starting to wear, and the company was looking for a way to protect it before serious damage occurred.

SUBSTRATE

Metal

PRODUCTS USED

RESIMETAL 201 Ceramic Repair Paste
RESIMETAL 202 Ceramic Repair Fluid (2 colors)

SOLUTION

RESIMETAL 201 Ceramic Repair Paste is a high-performance, multi-purpose metal repair compound developed for rebuilding metal components in a fluid flow environment which have been damaged by corrosion and erosion. It is ideal for rebuilding pump bodies, impellers, propellers, guide vanes, valves, tube sheets, water boxes, rudders, heat exchangers, etc.

RESIMETAL 202 Ceramic Repair Fluid is the fluid grade formula that offers outstanding protection against impingement, entrainment, erosion, and corrosion conditions.

RESIMETAL 202 Ceramic Repair Fluid is a high-performance, solvent-free, coating designed for use where exceptional resistance to chemical attack is needed even under total immersion conditions.

RESIMETAL 202 Ceramic Repair Fluid is applied using a two-coat system. Each coat is a different color which allows the client to monitor when the bottom color begins to show through.