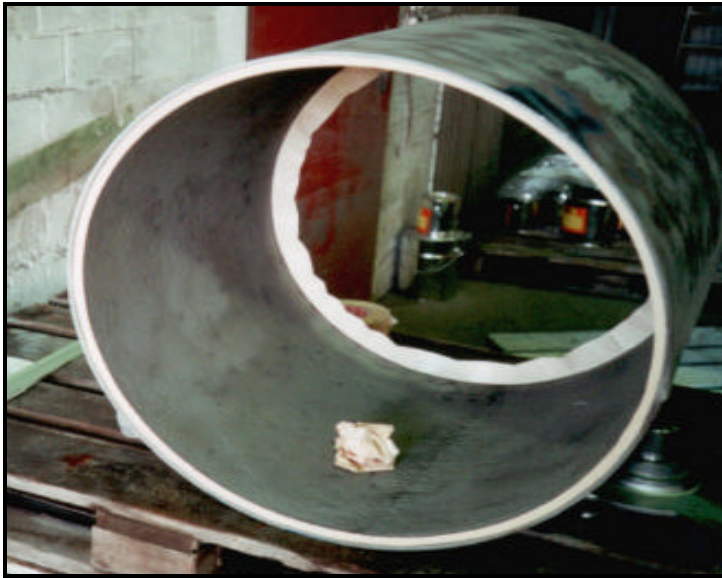


Project: WWTP Water Pump Ring Housing



The Problem

The water pump ring housing at this waste water treatment plant was badly damaged and not functioning at peak efficiency.

The company was looking for a cost effective alternative to buying new equipment.

The Solution

The surfaces of the water pump ring housing were cleaned and then abrasive blasted. 3M Scotchkote Rebuild EG 515 was applied by spatula, making sure that no air was trapped. 3M Scotchkote Lining FG 514 was then applied by brush to create a smooth, even surface.

3M Scotchkote Rebuild EG 515 is a high-performance, solvent-free, flexible, poly-ceramic compound designed for the rebuilding and resurfacing equipment operating in a fluid flow environment. 3M Scotchkote Lining FG 514 is the fluid grade formula.

Both 3M Scotchkote Rebuild EG 515 and 3M Scotchkote Lining FG 514 provide outstanding protection against impingement, entrainment, cavitation, erosion, and corrosion.

